

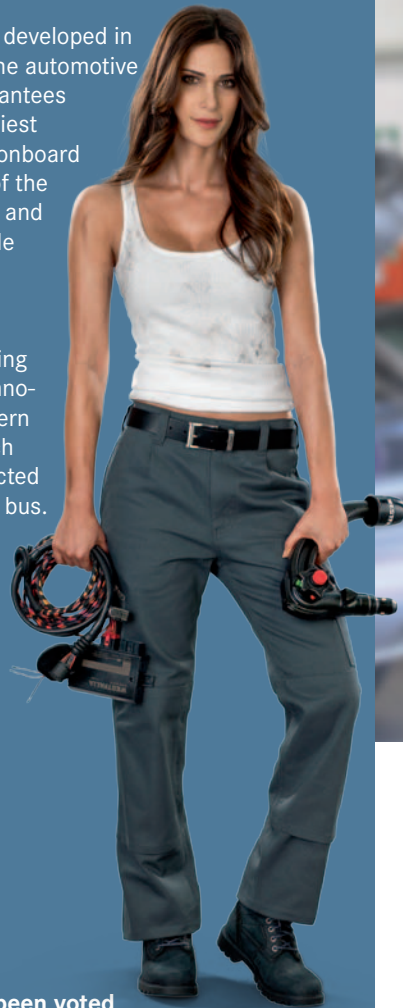
## WESTFALIA WIRING KITS

### 7 and 13 Pin

WESTFALIA is the only manufacturer of towbars that also produces the wiring kits necessary for lighting the trailer.

The wiring kits are developed in conjunction with the automotive industry. This guarantees optimal fit, the easiest connection to the onboard electrical system of the respective vehicle, and the highest possible level of safety.

The product range stretches from wiring kits with relay technology to highly modern CAN bus kits, which are actively connected to the vehicle data bus.



WESTFALIA has been voted the "Best Brand" – for the 7th consecutive year!

When selecting the "Best Brand 2012", readers of the magazine "Auto Motor und Sport" voted WESTFALIA the winner in the "towbar" category.

## WESTFALIA KITS

### Everything from a single source with favourable pricing

Do you know our kits? A kit is a combination of the towbar together with a vehicle-specific wiring set. WESTFALIA is the only manufacturer to offer over 650 such kits.

Kits save time and money, and spare your nerves. Two products – one order process. Two products – one delivery. Two products – one bargain price.



- Retractable, detachable or fixed systems
  - Reliable
  - Original manufacturer quality
  - Precision engineered for a perfect fit.
  - User-friendly
  - Millions of towbars sold
  - EC approved
- Use of original parts
  - Easy assembly
  - Extremely reliable
  - Complete product portfolio
  - Complete functionality through connection to onboard electrical systems



"My apprentice can even install them in record time."

# WESTFALIA

## TOWBARS AND WIRING KITS

WESTFALIA-Automotive GmbH

Am Sandberg 45  
33378 Rheda-Wiedenbrück  
[www.westfalia-automotive.de](http://www.westfalia-automotive.de)

Errors and omissions  
excepted. Issued 05/2013.

## WESTFALIA TOWBARS

### The original. What else!

The good name of the WESTFALIA brand has been shaped by its reputation for designing and manufacturing high-quality towbars, these are developed in close cooperation with the automotive industry. Every towbar is engineered to precisely fit the individual vehicles towbar mounting points. This results in an absolutely perfect fit and quick and easy installation.

State of the art design and production processes, including 3D CAD systems, numerous welding robots, laser cutting systems, and CNC processing centres ensure custom-tailored, high-quality and perfectly constructed towbars.

To meet our own very high quality standards for corrosion protection and those of the automotive industry, every WESTFALIA towbar is coated by means of the cathodic dip coating process (CDC). Of course all models are EC-approved and therefore need not be registered.

With over 1300 different towbar models in our current range, WESTFALIA is perfectly positioned to supply solutions for almost all European vehicle models – all with 24-hour service in the aftermarket.



**WESTFALIA**

## 1 RETRACTABLE TOWBARS

### The Innovation

Invisible and always ready for use: Retractable towbars are one of the latest product developments at WESTFALIA, they provide convenience and easy operation. Retractable systems are always immediately ready-to-use and are completely hidden from view.

If the towbar is needed, it can be swung out in seconds – electrically or manually. Otherwise it will remain invisible behind the bumper.

## 2 DETACHABLE TOWBARS

### The Best Seller

With the continual improvement in the aesthetics of modern vehicles, the detachable towbar has enjoyed growing popularity. When the neck of the towbar is removed, there is no visual indication that a towbar has been fitted. These towbars are available in two automatic versions: Either a horizontal or vertical detachable system.

## 3 FIXED TOWBARS

### The Classic

The fixed model is the lowest-priced towbar and is particularly suitable for every-day use.

They are available with welded or bolted in towball neck. They are functional and easy to install.

## 4 TRAILER BRACKETS

### Heavy Duty

Trailer brackets are available for every van or light truck. The trailer bracket is for very high tow loads and is equipped with a screw-down plate and the option of using an open-ended hitch.

